

Finest Treble Booster

MODEL
HS

EXCLUSIVE BY
BSM

BSM would like to congratulate you on the purchase of your **HS Treble Booster!**

The **HS** is based on the British HORNBY SKEWES unit produced between 1967 and 1969, as used by **Ritchie Blackmore**, the brilliant and impulsive guitarist of **Deep Purple**. The unit produces a mild but nevertheless powerful and biting sound that was used to help create the epochal masterpieces "Deep Purple In Rock" and "Made In Japan".

The long yearned for new edition, now issued under the name **HS** from **BSM**, includes the same germanium transistors as the the original 1967 version.

Almost all British rock guitarists using single coil pickup guitars used a germanium Treble Booster from the late 60's to the mid 70's. By the end of the seventies, the Treble Booster was replaced by a new circuit from Japan, the so called Tube Screamer and other similar overdrive circuits. These were based on the old Treble Boosters and therefore had a very similar frequency response. The germanium boosters on the other hand, sadly fell into oblivion despite their unique and inimitable sound.

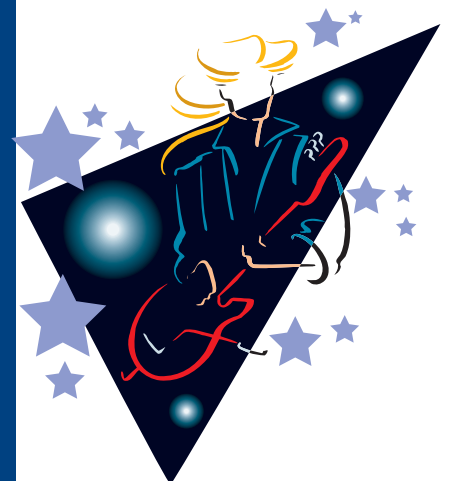
The **HS** Treble Booster has been specifically designed for single coil pickups with a relatively low coil inductance, such as pickups in Fender, Rickenbacker, Burns or Vox guitars. On these pickups, the **HS** produces (with the volume control of the guitar turned up to the max) a fat, biting and penetrating lead sound, minus any shrill characteristics. By lowering the guitar's volume control, many shades of crunch can be easily dialed in. Another thing to consider is that when a guitar amp's volume is turned up (reaching saturation), the power amp normally begins to mute the highs, which results in a duller sound. At an amp's full tilt, the **HS** Treble Booster allows a more transparent tone (covering the entire frequency range) to shine through. The presence control on the amp need only be minimally used (if at all). When vintage amps are used (such as the Fender Deluxe, Fender Bassman, Vox AC30, Marshall JTM 45 or Marshall Plexi) it is amazing what effect the use of a good treble booster has.

It is also of interest to note that Ritchie Blackmore used modded Marshall Major 200 heads and played on 'Made In Japan' with the following settings: Presence 0; Bass 4; Middle 5; Treble 6-7; Volume 7-8.

The Treble Booster is inserted between guitar and amplifier, not into the FX loop. The magical tone is achieved by the interaction between guitar pickup, treble booster and amplifier. The unit is powered by a 9V battery with a current consumption of aprox. 250 μ A. The average output level is 10dBm, the maximum output voltage when the strings are struck really hard is 7V max. By direct drive a tubeamp, the Model **HS** is first choice, by inserting a FX pedal, use **HS-Custom** unit.

Note: The positive pole of the battery is ground.

M a d e i n G e r m a n y



Enjoy your HS and good rocking'...